



# **Eco Support Products**

## **SUBMITTALS**



### Wholesale Products

#### ECOBLOCK

Pipe Support's



3

#### QUICK-FRAME

Duct Supports



4-5

#### MINI-FRAME

Mini-Split Stands



6-9

### Pre-Engineered Equipment Stands

#### EcoFrame

24" Cross Bars

48" Cross Bars

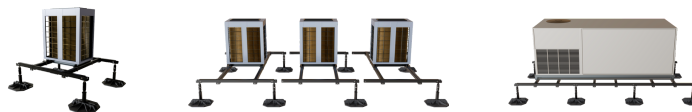


10

#### EcoFrame-XL

60" Cross Bars

72" Cross Bars



11

#### FlexFrame

96" Cross Bars

120" Cross Bars

144" Cross Bars



12

#### Seismic Bracing



13

## EcoBlock

EcoBlock is designed to support piping, conduit, and light equipment. Standard Block (EB-9) accepts strut, threaded rod, and standard fittings. Base Blocks are UV stabilized.

Block Weight	2.6 lbs
Block Dimensions	W: 9" D: 6.25" H: 3.3"

### Working Conditions

Celsius	-50 +83	Fahrenheit	-58 +181
---------	---------	------------	----------

### Chemical Composition

EcoFoot Base	Polypropylene Co-Polymer
Rubber Mat	Recycled crumb rubber 74% Polypropylene & UV Stabilizer 24% Compatibilizer 2%

### Benefits:

- Accepts standard applications & fittings.
- UV stabilized.
- Made from recycled contents.
- Made in Canada.
- 15 year product warranty.

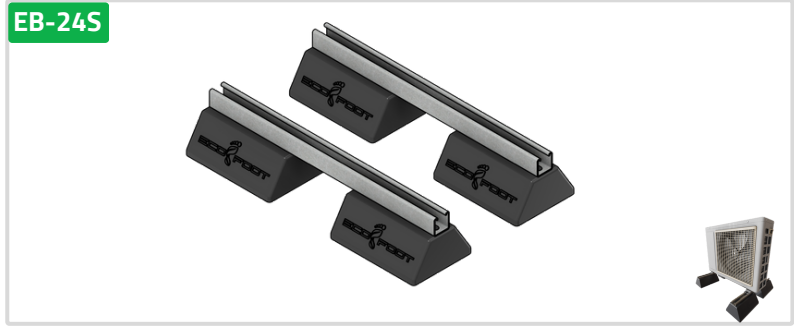
EB-9



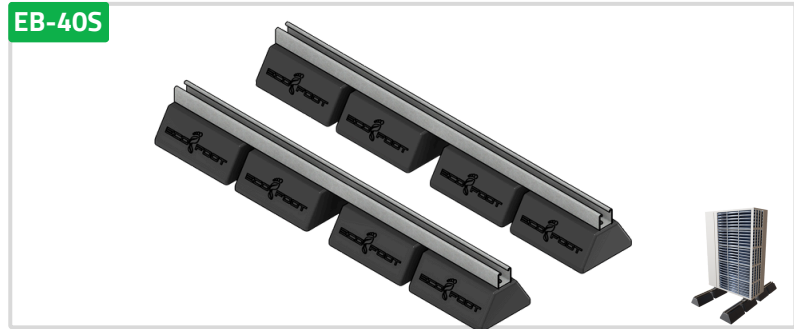
EB-9S



EB-24S



EB-40S



### Specification Reference:

Equipment supported on EcoBlock, made from 100% recycled content, accepts to 1-7/8" strut, secured to by nut & bolt (glue and adhesive - not sufficient & not accepted). UV stabilized and non-penetrative. Manufactured by Eco Support Products.

## Duct Supports

### QuickFrame-120

QF-120 is a 12" x 12" non-penetrative base kit designed to support duct work and piping systems. Bases accept 1-5/8" strut and 1/2" threaded rod and easily adapt to standard accessories. Strut is contractor supplied.

#### Working Conditions

**Celsius** -50 +83

**Fahrenheit** -58 +181

#### Chemical Composition

**Base** Polypropylene Co-Polymer

**Rubber Mat** Recycled Crumb Rubber 74%  
Polypropylene & UV Stabilizer 24%  
Compatiblizer 2%

#### QF-120



#### Benefits:

- Non-penetrative bases.
- Vibration mats included.
- Accepts standard fittings.
- On site adaptability.
- Made from recycled contents.
- Made in Canada.
- 15 Year product warranty.

#### Specification Reference:

Supported on non-penetrative 12" x 12" polypropylene co-polymer base, includes fitted vibration mats. Bases accept 1-5/8" strut. Manufactured by Eco Support Products.





### QuickFrame-175

QF-175 is a 17.5" x 17.5" non-penetrative base kit designed to support duct work and piping systems. Bases accept 1-5/8" strut and 1/2" threaded rod and easily adapt to standard accessories. Bases accept ballast weight. Strut is contractor supplied.

#### Working Conditions

<b>Celsius</b>	-50 +83	<b>Fahrenheit</b>	-58 +181
----------------	---------	-------------------	----------

#### Chemical Composition

<b>Base</b>	Polypropylene Co-Polymer
-------------	--------------------------

<b>Rubber Mat</b>	Recycled Crumb Rubber 74% Polypropylene & UV Stabilizer 24% Compatiblizer 2%
-------------------	--

#### QF-175



#### Benefits:

- Non-Penetrative bases.
- Vibration mats included.
- Accepts standard fittings.
- On site adaptability.
- Made from recycled contents.
- Made in Canada.
- 15 year product warranty.

#### Specification Reference:

Supported on non-penetrative 17.5" x 17.5" polypropylene co-polymer base, includes fitted vibration mats. Bases accept 1-5/8" strut. Manufactured by Eco Support Products.



### Keplero XXL-100

WB-250 is a wall mount bracket capable of supporting units up to 250 lbs.

Keplero XXL-100



#### Benefits:

- Electro Galvanized plated sheet.
- Wall bracket with spirit level supplied.
- External polyester painting.
- Vibration dampening pads included.

#### Specification Reference:

Supported on EcoFoot WB-250 bracket. 250 lbs max load. Vibration dampening pads included.

## Mini Split Stands

### MiniFrame-Resi

MF-Resi is a non-penetrative equipment stand designed to support ground mounted units up to 300 lbs on a flat surface.

#### Chemical Composition

Base	Polypropylene Co-Polymer
Rubber Mat	Recycled Crumb Rubber 74% Polypropylene & UV Stabilizer 24% Compatiblizer 2%

#### Structural Data

Steel	A1011
Thickness	1/8"

#### MF-RESI



#### Benefits:

- Non-Penetrative bases.
- Anti-vibration mats Included.
- Shims included to level up to 1"
- Under 10 minute installation.
- Rust protective.
- 15 Year product warranty.
- Made in Canada.

#### Specification Reference:

Equipment supported on non-penetrative 18" tall 24" wide top bars. Bases are 12" x 12" polypropylene co-polymer that include anti vibration mats, stabilizing wings for lateral stability, shims to level up to 1". Steel is A1011 1/8" thick powder coated sandtex silver. Manufactured by Eco Support Products.



## Mini Split Stands

### MiniFrame-120

MF-120 is a non-penetrative equipment stand designed to support roof mounted single fan splits up to 300 lbs.

#### Chemical Composition

Base	Polypropylene Co-Polymer
Rubber Mat	Recycled Crumb Rubber 74% Polypropylene & UV Stabilizer 24% Compatibilizer 2%

#### Structural Data

Steel	A1011
Thickness	1/8"
Size	1-5/8"

MF-120



#### Benefits:

- Non-Penetrative bases.
- Anti-vibration mats included.
- Under 10 minute installation.
- Rust protective.
- 15 year product warranty.
- Made in Canada.

#### Specification Reference:

Equipment supported on non-penetrative 18" tall 42" wide top bars. Bases are 12" x 12" polypropylene co-polymer that include anti vibration mats and stabilizing wings for lateral stability. Steel is A1011 1/8" thick powder coated sandtex silver. Manufactured by Eco Support Products.



MiniFrame-175

MF-175 is a non-penetrative equipment stand designed to support roof mounted splits up to 400 lbs.

Chemical Composition

Base	Polypropylene Co-Polymer
Rubber Mat	Recycled Crumb Rubber 74% Polypropylene & UV Stabilizer 24% Compatiblizer 2%

Structural Data

Steel	A1011
Thickness	1/8"
Size	2" x 2"

MF-175



Benefits:

- Non-Penetrative bases.
- Anti-vibration mats Included.
- Shims included to level bases.
- Under 10 minute installation.
- Rust Protective.
- 15 Year product warranty.
- Made in Canada.

Specification Reference:

Equipment supported on non-penetrative 18" tall 42" long top bars. Bases are 17.5" x 17.5" polypropylene co-polymer that include anti vibration mats and stabilizing wings for lateral stability. Bases accept ballast weight. Steel is A500 1/8" thick powder coated sandtex black. Manufactured by Eco Support Products.





## EcoFrame (EFMD)

EcoFrame is a pre-engineered non-penetrative stand designed to support VRF/VRV equipment on flat roof surfaces. The modular design connects lengthwise to support multiple configurations. Each leg is height adjustable. Steel is rust protective and powder coated.

### Chemical Composition

Base	Polypropylene Co-Polymer
Rubber Mat	Recycled Crumb Rubber 74% Polypropylene & UV Stabilizer 24% Compatiblizer 2%

### Structural Data

Steel	A500
Thickness	1/8"
Size	2" x 2"



### Benefits:

- Non-Penetrative bases.
  - Anti-vibration mats Included.
  - Height adjustable legs.
- Rust protective.
  - 15 year product warranty.
  - Made in Canada.
  - Wind & seismic designs available.

### Specification Reference:

Equipment supported on EcoFrame. 17.5" x 17.5" non-penetrative bases with anti vibration mats. A500 2" x 2" square tube, 1/8" thick steel.. Yield Strength of 50,000 PSI and a tensile strength of 62,000 PSI. Rust protective with sandtex double layered powder coating. Legs are height adjustable with saddles on each end. Bases accept ballast weight.





EcoFrame-XL (EFXL)

EcoFrame-XL is a pre-engineered non-penetrative stand designed to support large commercial equipment on flat surfaces. The modular design connects lengthwise to support multiple configurations. Each leg is height adjustable. Steel is rust protective and powder coated.

Chemical Composition

Base	Polypropylene Co-Polymer
Rubber Mat	Recycled Crumb Rubber 74% Polypropylene & UV Stabilizer 24% Compatiblizer 2%

Structural Data

Steel	A500
Thickness	1/8"
Size	2" x 2"



Benefits:

- Non-Penetrative bases.
- Anti-vibration mats Included.
- Height adjustable legs.
- Rust protective.
- 15 year product warranty.
- Made in Canada.
- Sind & seismic designs available.

Specification Reference:

Equipment supported on EcoFrame-XL. 17.5" x 17.5" non-penetrative bases with anti vibration mats. A500 2" x 2" square tube, 1/8" thick. Yield Strength of 50,000 PSI and a tensile strength of 62,000 PSI. Rust protective with sandtex double layered powder coating. Legs are height adjustable with saddles on each end. Bases accept ballast weight.



## FlexFrame (FF)

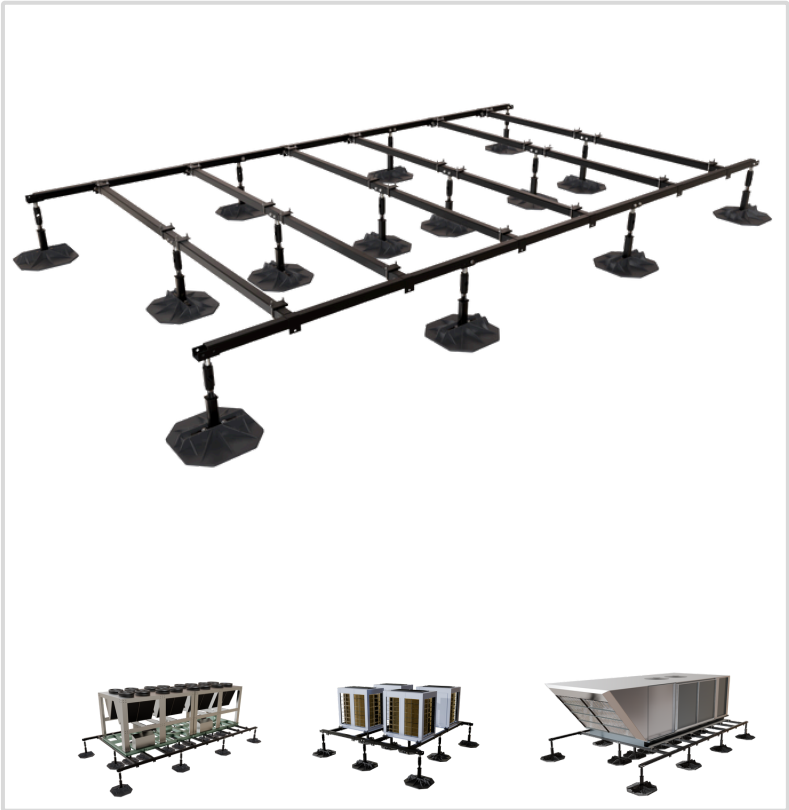
FlexFrame is a pre-engineered non-penetrative stand designed to support large commercial equipment on flat surfaces. The modular design expands lengthwise and widthwise to support multiple configurations and applications. Each leg is height adjustable. Steel is rust protective and powder coated. Bases accept ballast weight.

### Chemical Composition

Base	Polypropylene Co-Polymer
Rubber Mat	Recycled Crumb Rubber 74% Polypropylene & UV Stabilizer 24% Compatibilizer 2%

### Structural Data

Steel	A500
Thickness	1/8"
Size	2" x 2"



### Benefits:

- Non-Penetrative bases.
  - Anti-vibration mats Included.
  - Height adjustable legs.
- Rust protective.
  - 15 year product warranty.
  - Made in Canada.
  - Wind & seismic designs available.

### Specification Reference:

Equipment supported on FlexFrame. 17.5" x 17.5" non-penetrative bases with anti vibration mats. A500 2" x 2" square tube, 1/8" thick. Yield Strength of 50,000 PSI and a tensile strength of 62,000 PSI. Rust protective with sandtex double layered powder coating. Legs are height adjustable with saddles on each end. Bases accept ballast weight.



### Seismic Bracing (SMC)

The seismic (SMC) post is an additional accessory capable of withstanding 3KN of force depending on project requirements. Legs easily adapts to EcoFrame, EcoFrame-XL, and FlexFrame. Engineering Stamps available upon request.

#### Chemical Composition

<b>Base</b>	Polypropylene Co-Polymer
<b>Rubber Mat</b>	Recycled Crumb Rubber 74% Polypropylene & UV Stabilizer 24% Compatibilizer 2%

#### Structural Data

<b>Steel</b>	A500
<b>Thickness</b>	1/8"
<b>Size</b>	2" x 2"



#### Benefits:

- Minimally penetrative.
- Designed to meet local building codes.
- Height adjustable legs.
- Rust Protective.
- 15 Year product warranty.
- Made in Canada.

#### Specification Reference:

