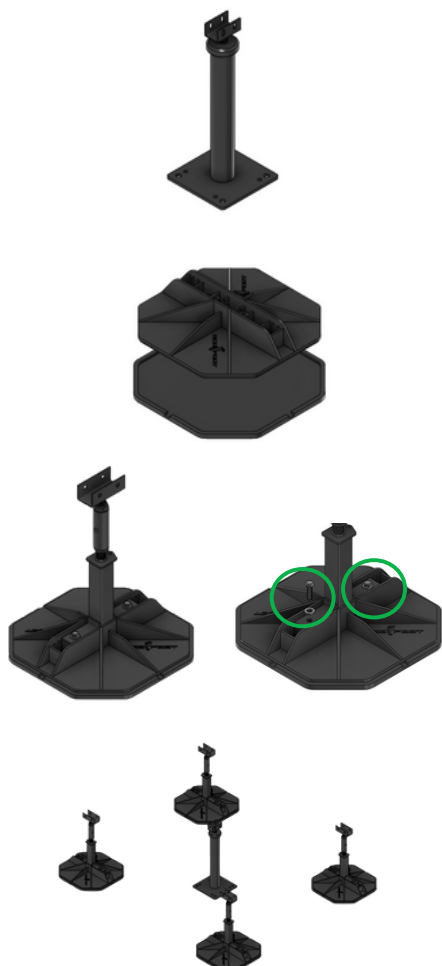


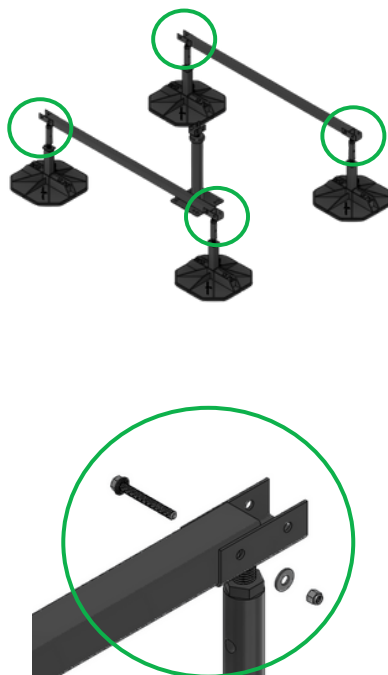
Seismic Leg Install



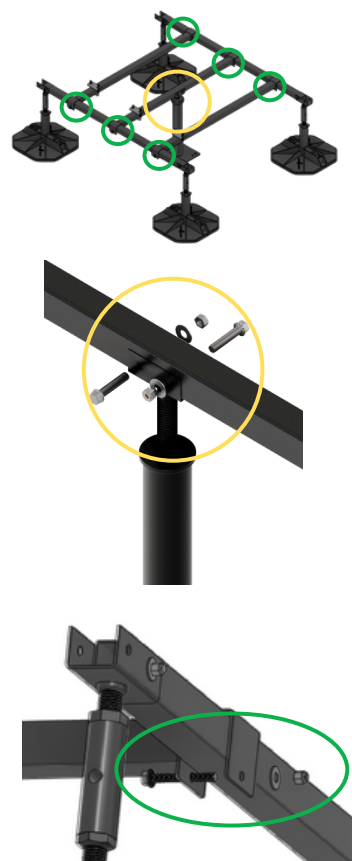
- 1 • Place seismic leg. Expose steel supports beneath roof surface. Secure and water seal using third party hardware.
- Once Seismic leg is secured, place bases and mats, secure legs to bases with provided LA-HWK.



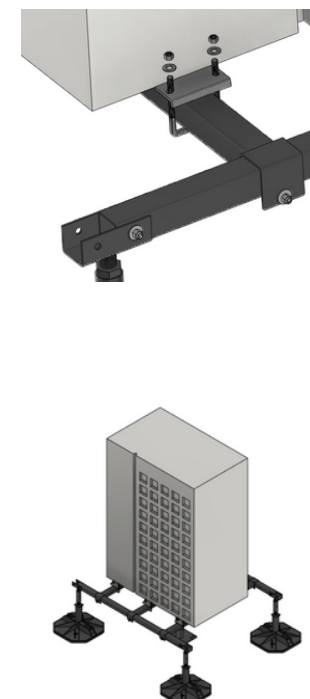
- 2 • Secure Plain Bars (PB) to bases using the provided PB/CB HWK.



- 3 • Once plain bars are secured, place cross bars (CB) on frame and secure using provided PB/CB HWK.
- Secure Seismic post to centre cross bar. Tap Screw holes and secure with provided PB/CB HWK



- 4 • Lastly, place and centre equipment on frame.
- Secure unit(s) to frame with provided clamp kits.



This sheet is meant only to highlight EcoFoot's products and specifications. Information is subject to change without notice. EcoFoot takes responsibility for furnishing quality materials, which meet published product specification. As neither EcoFoot itself, nor its representatives practice architecture, EcoFoot offers no opinion on, and expressly disclaims any responsibility for the soundness of any structure on which its products may be applied. If questions arise as to the soundness of structure, or its ability to support planned installation properly, the Owner should obtain opinions of competent structural engineers before processing. EcoFoot accepts no liability for any structural failure or for resultant damages, and no EcoFoot Representative is authorized to vary this disclaimer.